

ImPERFECT

Directed by Sol Picó

TECHNICAL SHEET

 PREMIO NACIONAL
DE ARTES ESCÉNICAS PARA LA
INFANCIA Y LA JUVENTUD 2020



La Bafdufa



BEST
LARGE-FORMAT
SHOW AWARD
FETEN 2023



TECHNICAL SHEET

What follows is a standard/optimal technical specification which guarantees ideal lighting conditions for the production. From this, the company can adapt and optimise the specification to reflect and benefit from the characteristics of each theatre, or may accept lower specifications as long as the programmer is aware of and accepts the artistic repercussions such a cutback implies.

LIGHTING

Spotlights

- 13 profile 25° 50°
- Robe LedBeam 150 (provided by the company)
- 12 led par (provided by the company)

Other

- Sufficient emergency lighting for the wings and corridor behind the backdrop.
- Provision of ground-laid power cables, regulated and direct ground, as shown on the attached lighting plan.
- Dimmer lighting for the hall, where possible controlled via the lighting console.
- Sufficient power to supply ALL spotlights in the attached lighting plan as well as the ground cables.
- We need to load the dimmers on each of the five channels on the floor.
- We carry the necessary power and DMX wiring for the mobiles and pair of LEDs, but if possible, a DMX signal to the four bars we use would be appreciated. 3-pin DMX connector.
- We carry our light table

Note: The layout of the equipment must be done according to the attached lighting plan.

TECHNICAL COORDINATION: La Baldufa
+34 973 281 457 | tecnica@labaldufateatre.com

SOUND

- **PA** adequate and suitable for the characteristics of the hall
- Mac with Qlab in the control cabin.
- **Monitors:** the ideal option would be 2 sidefills and 2 more monitors at the back of the stage to ensure full coverage and adequate sound pressure on stage. The location of the equipment will be dedicated to the arrival of the company.

STAFF

The personnel required for the set up will be:

- 2 loading and unloading personnel.
- 2 machinists (1 minimum).
- 1 lighting technician.
- 1 sound technician.

They must have a perfect knowledge of the theater equipment.

DRESSING ROOMS AND OTHERS

- 1 dressing room for three people, equipped with W.C., chairs, clothes hooks, hot showers, at least one two pin 220V Schuko socket/adapter and at least one mirror.
- Sufficient mineral water for the setup, performance and dismantling.

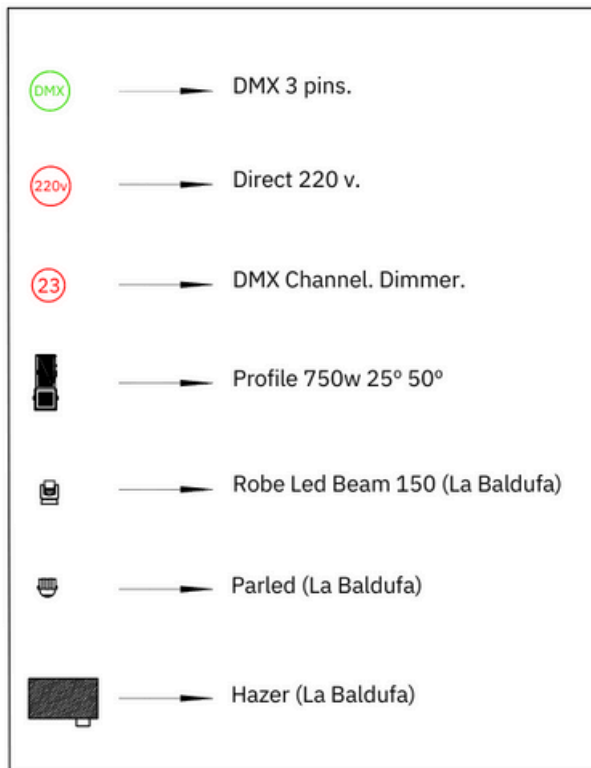
SPACE AND EQUIPMENT

- Optimal stage dimensions :12 m width x 10 m depth x 6 m height.
- Black box with regular (wide) wings to ensure its absolute capacity.
- Staircase from the house to the stage.
- Black linoleum 8 x 8 m.
- The scenery consists of a 10 x 8 m canvas that moves during the show. The movements are made by means of ropes that are hooked to wooden bases on the stage (6 in total. 3 per side) and small pulleys placed in a rectangular structure (made of very light carbon tubes) that we hang by means of claws to 3 bars of the theater.
- If it is not possible to nail the bases to the theater floor, weights should be used (about 40 kg. per base).
- The selection of the bars to insert the tubes will be made upon arrival at the theater, as well as the final adjustment of the black chamber.
- The working height of the rods will be 6 meters.
- During the show, Hazer type smoke will be thrown.

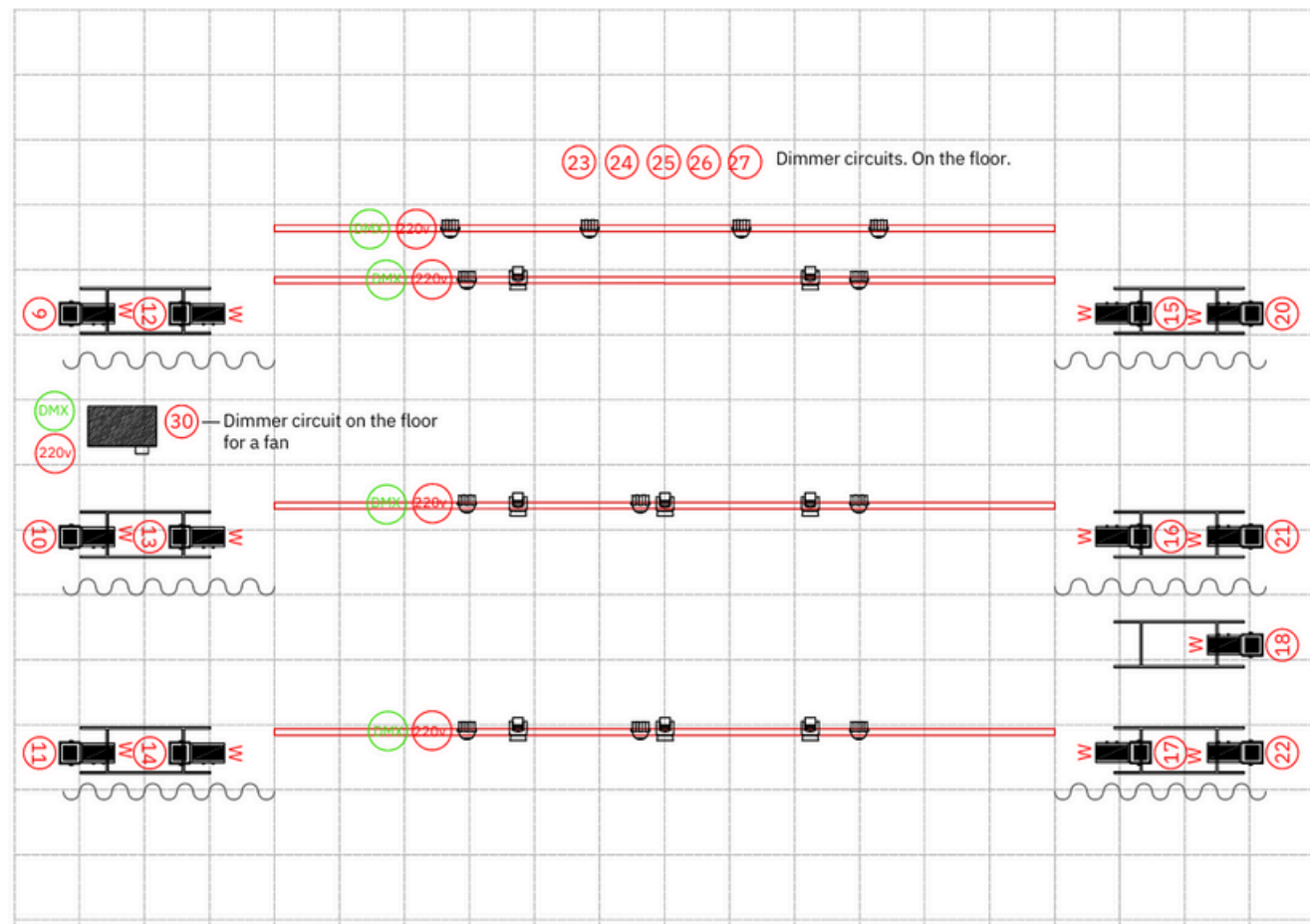
WORK SCHEDULE

HOUR	ACTIVITY	STAFF
First hour and a half (0:00h a 1:30h)	<ul style="list-style-type: none"> • Unloading • Implementation of lighting plan • Decide on the location of the scenery and the monitors • Scenery implementation • Set up black box for performance • Set up and test technical equipment on the stage 	<ul style="list-style-type: none"> • 2 people for unloading • 2 multi-purpose technicians • 1 machinist
Next half hour (1:30h a 2:00h)	<ul style="list-style-type: none"> • Installing linoleum • Test and adjust sound equipment • Position props and performance aids 	<ul style="list-style-type: none"> • 2 multi-purpose technicians
Next two and a half hours (2:00h a 4:30h)	<ul style="list-style-type: none"> • Focusing • Programming • Rehearsal 	<ul style="list-style-type: none"> • 2 multi-purpose technicians
Next half hour (4:30h a 5:00h)	<ul style="list-style-type: none"> • Audience enters 	<ul style="list-style-type: none"> • 2 multi-purpose technicians
Next three quarters of an hour (5:00h a 5:45h)	<ul style="list-style-type: none"> • PERFORMANCE 	<ul style="list-style-type: none"> • 2 multi-purpose technicians
Next quarter of an hour (5:45h a 6:00h)	<ul style="list-style-type: none"> • Audience leaves 	<ul style="list-style-type: none"> • 2 multi-purpose technicians
Next hour (6:00h a 7:00h)	<ul style="list-style-type: none"> • Dismantle the set (disassembly) 	<ul style="list-style-type: none"> • 2 multi-purpose technicians
Next half hour (7:00h a 7:30h)	<ul style="list-style-type: none"> • Loading 	<ul style="list-style-type: none"> • 2 people for loading

LIGHTING PLOT



SCALE





Companyia de Comediants La Baldufa, SCCL

C/ Músic Vivaldi, 12, baixos

25003 Lleida

baldufa@labaldufateatre.com

www.labaldufateatre.com

+34 973 281 457



COPRODUCTION



COLLABORATION



WITH THE SUPPORT OF

