

Amal

TECHNICAL SHEET



La Baldufa

PREMIO NACIONAL DE ARTES ESCÉNICAS
PARA LA INFANCIA Y LA JUVENTUD 2020

TECHNICAL SHEET. **INDOOR**

SPACE AND EQUIPMENT

- **Minimum** stage measures:
8m width x 6m depth x 4,70m height.
- **Optimal** del espacio de actuación:
10m width x 8m depth x 6m height.
- Black box with regular (wide) wings to ensure its absolute capacity.
- If the stage is tilted or has any inclination please take it up with the company.
- During the show, a smoke machine is used (provided by the company).
- Approximate assembly time: **5h**
- Approximate disassembly time: **1h**

SOUND

- Suitable speaker system for the characteristics of the room and its capacity.
- Soundboard (only one stereo channel is used).
- 2 Monitors sidefills.

LIGHTING

Spotlights:

- 10 led par.
- 17 profile (8 15°-30° | 9 25°-50°).
- 18 pc's 1kW.
- The company travels with its own Lighting Control Desks.

Otros:

- Provision of ground-laid power cables, regulated and direct ground, as shown on the attached lighting plan.
- 6 stage-wings structures (columns) to install lightning on different levels.
- Dimmer lighting for the hall, where possible controlled via the lighting console.
- Sufficient power to supply ALL spotlights in the attached lighting plan as well as the ground cables.

Note: The layout of the equipment must be done according to the attached lighting plan.o.

STAFF

The personnel required will be:

- 2 loading and unloading personnel.
- 2 machinists (1 minimum).
- 1 lighting technician.
- 1 sound technician.

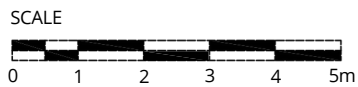
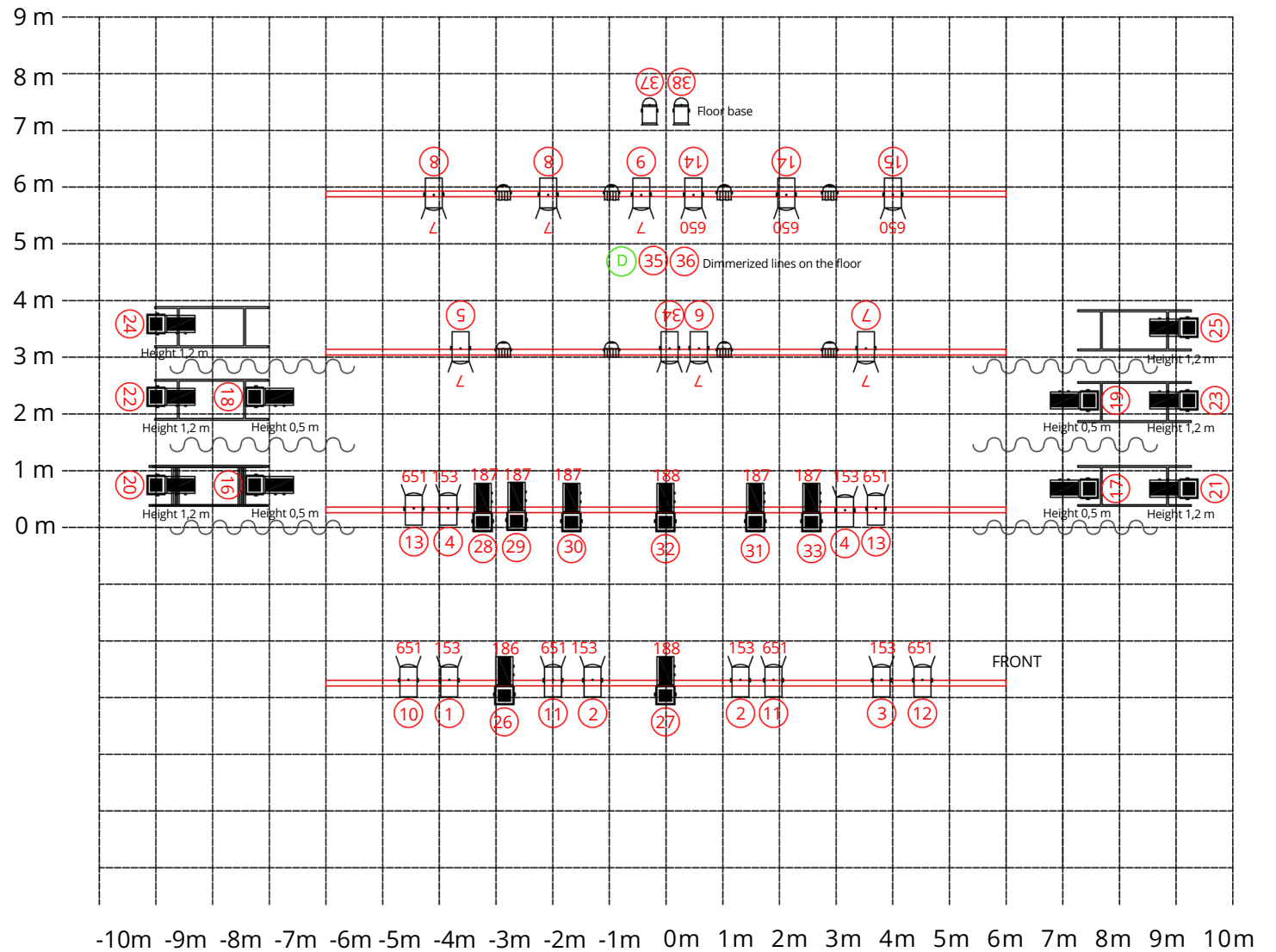
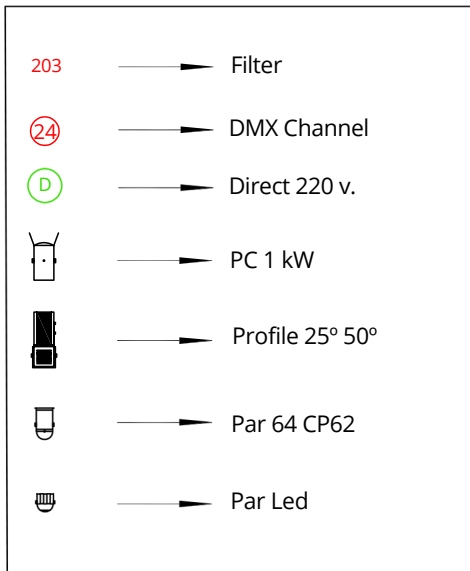
They must have a perfect knowledge of the theater equipment.

DRESSING ROOMS AND OTHERS

- 1 dressing room equipped with W.C., chairs, clothes hooks, hot showers, at least one mirror.
- Sufficient mineral water for the setup, performance and dismantling.

TECHNICAL COORDINATION: Anjos Fernández | +34 659 050 451 | anjos@vtecnicos.com

LIGHTING PLOT



TECHNICAL SHEET. OUTDOOR

SPACE AND EQUIPMENT

- **Minimum** stage measures:
8m width x 6m depth x 4,70m height.
- **Optimal** del espacio de actuación:
10m width x 8m depth x 6m height.
- Flat and leveled ground.
- Minimum stage size of 8m x 6m (Length x Width). Plateaux Height between 0.60 m and 1.20m (NOT provided by the company).
- 1 Schuko-type socket of 16 amps at the back of the stage.
- The audience should be positioned frontally.
- Approximate assembly time: **4h**
- Approximate disassembly time: **1h**

SOUND

- Suitable speaker system for the characteristics of the room and it's capacity.
- Soundboard (only one stereo channel is used).
- 2 Monitors sidefills.

LIGHTING

In case the performance is scheduled at night, please consult with the company

DRESSING ROOMS AND OTHERS

- 1 dressing room equipped with W.C., chairs, clothes hooks, hot showers, at least one mirror.
- Sufficient mineral water for the setup, performance and dismantling.

STAFF

ESSENTIAL: Minimum 2 pers. for loading, unloading and assembly assistance .



TECHNICAL COORDINATION: Anjos Fernández | +34 659 050 451 | anjos@vtecnicos.com



Companyia de Comediants La Baldufa, SCCL

C/ Músic Vivaldi, 12

25003 Lleida

www.labaldufateatre.com



COPRODUCTION



WITH THE SUPPORT OF:

 Generalitat de Catalunya
Departament de Cultura

 Institut Català de les
Empreses Culturals



 institut
ramon llull

CENTRO DI RESIDENZA ARTISTICA DELLA LOMBARDIA
INTERCETTAZIONI